

# Fletcher 3100®

ING • SIGN FABRICATORS • DIGITAL PRINT & PHOTO LABS • CUSTOM PICTURE FRAMER • PROFESSIONAL ARTIST • HOBBYIST • ARTS & GRAPHIC MATTING •

## Fletcher 3100® Multi-Material Cutter

Interchangeable  
Cutting Head Technology

Score &  
Break-Out Feature  
For Glass & Acrylic

2903

**Matboard**  
4, 8, 12 ply

**MDF**  
Up to 3/32" (2.4mm)

**Aluminum  
Sheets**  
Up to .040"

**Backing  
Board**  
Up to 3/32" (2.4mm)

**Glass**  
Up to 1/4" (6mm)

**PVC**  
Up to 1/4" (6mm)

**Acrylic**  
Up to 1/4" (6mm)

**Corrugated  
Plastics**  
Up to 1/2" (13mm)

**Foamboard**  
Up to 1/2" (13mm)

### Accurate. Versatile. Durable. Profitable. Proven.

Since 1868, Fletcher-Terry has been revolutionizing advanced panel cutting for numerous global industries. The versatile F-3100 Multi-Material Cutter features a spring-loaded cutting assembly with interchangeable cutting heads allowing you the convenience of quickly switching from one material to another.



Part # 12-212

NEW Interchangeable Cutting Head  
Cuts ACM Up to 2mm.  
See all five cutting heads overleaf

**Fletcher Business Group**

[www.fletcher-terry.com](http://www.fletcher-terry.com)

Authorised Fletcher  
Distributor



[www.lionpic.co.uk](http://www.lionpic.co.uk)

• SIGN FABRICATORS • DIGITAL PRINT AND PHOTO LABS • CUSTOM PICTURE FRAMER • PROFESSIONAL ARTIST • HOBBYIST • ARTS & GRAPHIC MATTING • O

**Plastics & Acrylics**  
Up to 6mm / 1/4"

**Gator Board**  
Up to 13mm / 1/2"

**Aluminium sheets**  
Up to 1.0mm / 0.04"  
ACP Up to 2.0mm / 0.08"

**MDF**  
Up to 2.4mm / 3/32"  
ACM Up to 2mm / 0.078"

**Glass**  
Up to 6mm / 1/4"

Interchangeable  
Cutting Heads



#12-213 included  
Score Blade #05-712

#12-211 included  
Knife Blade #05-004

#12-224 optional  
Wheel Set #05-716 Bearings #12-215

#12-212 included  
Wheel Set #05-715 Bearings #12-215

#12-214 included  
Wheel #02-120

## Unique Performance Features

- Interchangeable Cutting Head technology
- Cuts clean & debris-free
- Mounts on wall or free-standing
- Cuts wide range of substrates

## F-3100 Technical Spec

**Cutting Head:** Rides on high tensile strength steel tube, hard chrome plated and polished, resulting in smoother gliding action for consistent cutting head performance and longevity.

**Vertical Bars:** Rails do not bend or flex during the cutting process for straight, accurate cutting over the entire substrate height.

**Material Clamping System:** Patented lever-type clamping system that secures in place various substrate heights up to 1600mm / 63" to prevent buckling and shifting of material during the cutting process.

**Laser Alignment:** A laser sight line system for accurate cutting is available as an option.

## Fletcher F-3100

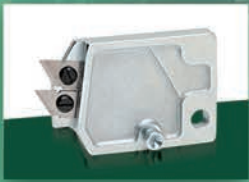
**2903** F3100 Multi-Material Cutter 04-715

**Includes** User Manual and:  
Interchangeable cutting heads:  
Mat/Foamboard 12-211  
Mat/Foamboard Blades x 10 05-004  
Plastic 12-213  
Plastic Blades x 10 05-712  
MDF 12-212  
MDF Cutting Wheel Set x 1 05-715  
Glass 12-214  
Steel 120° Glass Wheel x 10 02-120  
Wall Mounting Brackets x set

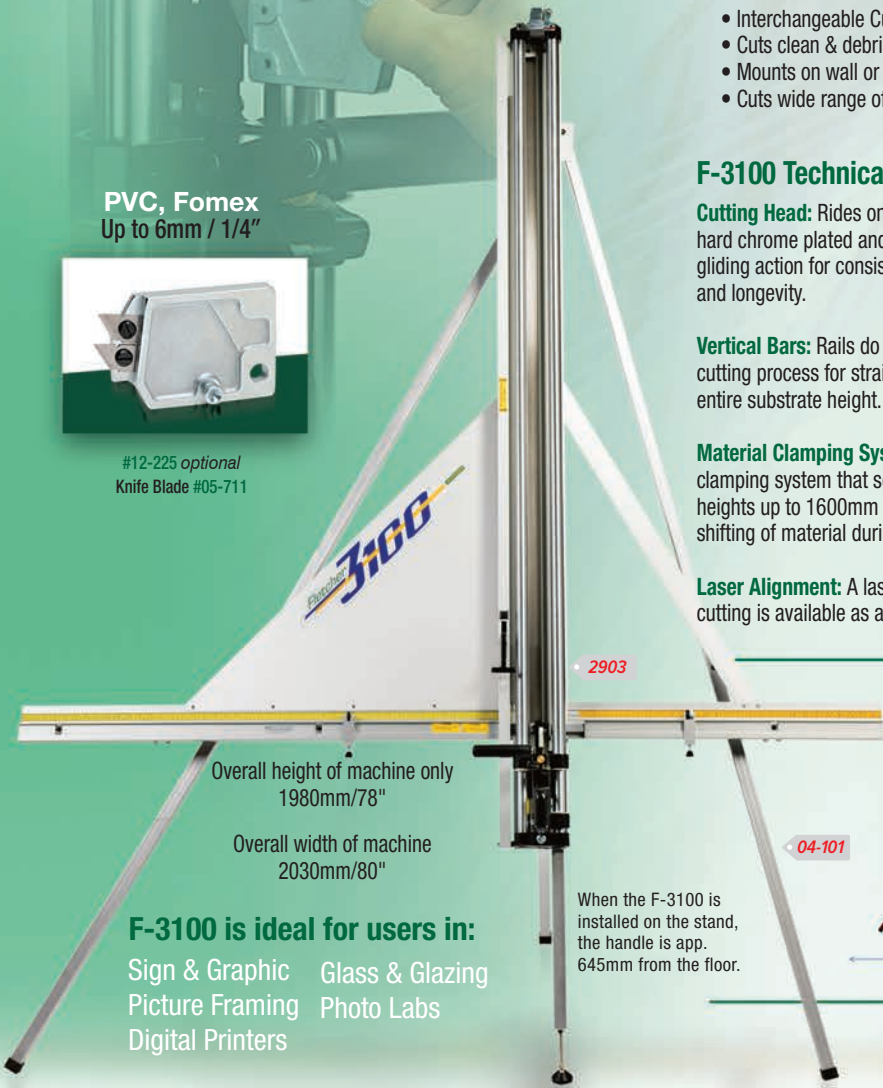
## Accessories

**2941** Utility Blades (100/box) 05-004  
**2749** Plastic Scoring Blade (10) 05-712  
**2942** MDF Cutting Wheel Set 05-715  
**2780** Steel Glass Wheel (10) 02-120  
**2755** TC Glass Wheel 03-126  
**2751** PVC Cutting Blades (10) 05-711  
**900** M-3000 Blades (10) 05-001  
**2751** M81 Mat Blade (10/tube) 05-711  
**2940** 3100 Measuring Stop 04-114  
**05-716** Aluminum Cutting Wheel Set  
**04-101** Mounting Stand

**PVC, Fomex**  
Up to 6mm / 1/4"



#12-225 optional  
Knife Blade #05-711



Overall height of machine only  
1980mm/78"

Overall width of machine  
2030mm/80"

## F-3100 is ideal for users in:

Sign & Graphic  
Picture Framing  
Digital Printers

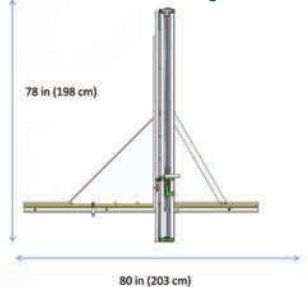
Glass & Glazing  
Photo Labs

When the F-3100 is installed on the stand, the handle is app. 645mm from the floor.

## Stand Mounting



## Wall Mounting



Check prices at: [www.lionpic.co.uk](http://www.lionpic.co.uk)

**Fletcher Business Group**

[www.fletcher-terry.com](http://www.fletcher-terry.com)

Authorised Fletcher  
Distributor



[www.lionpic.co.uk](http://www.lionpic.co.uk)