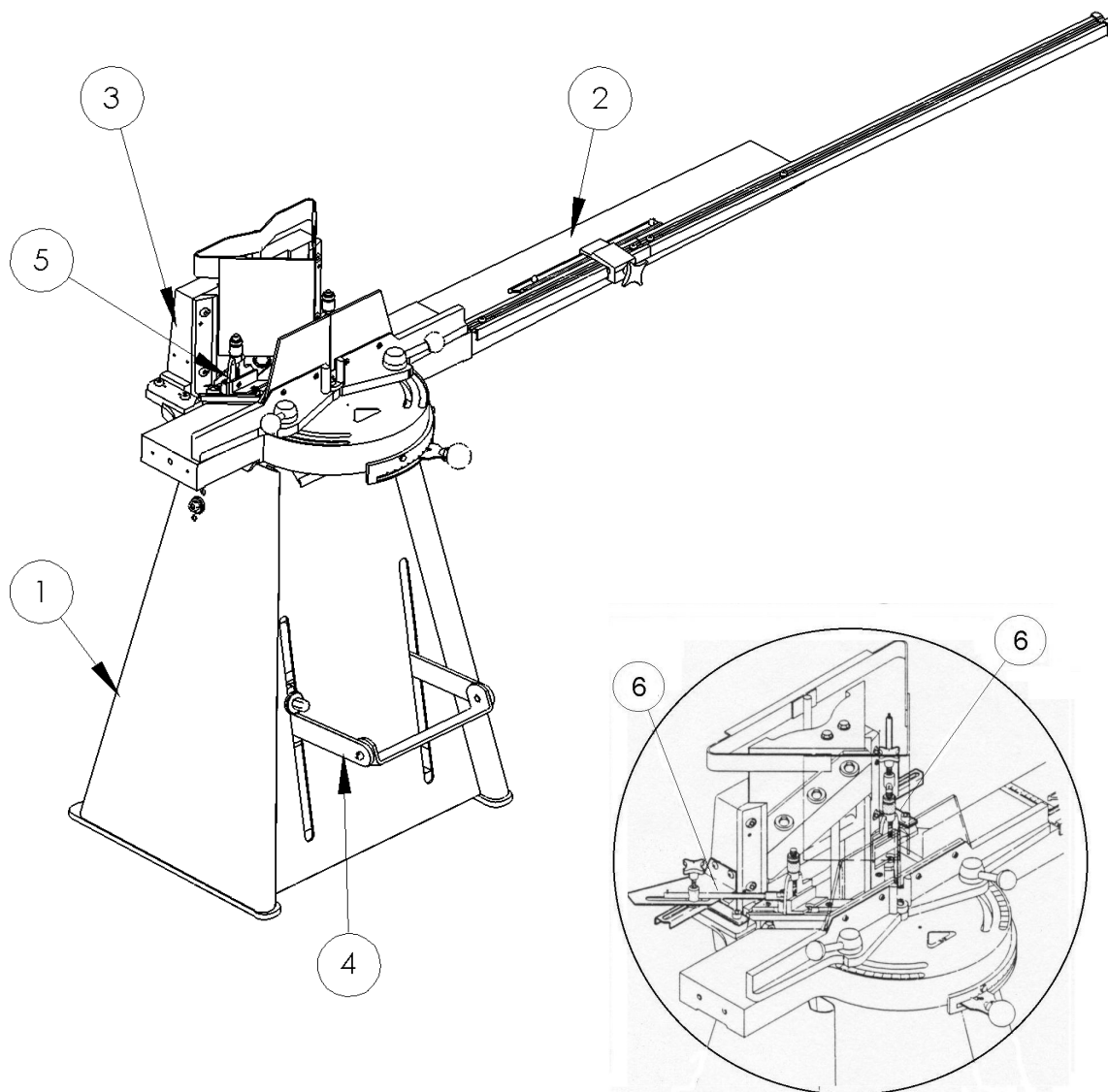
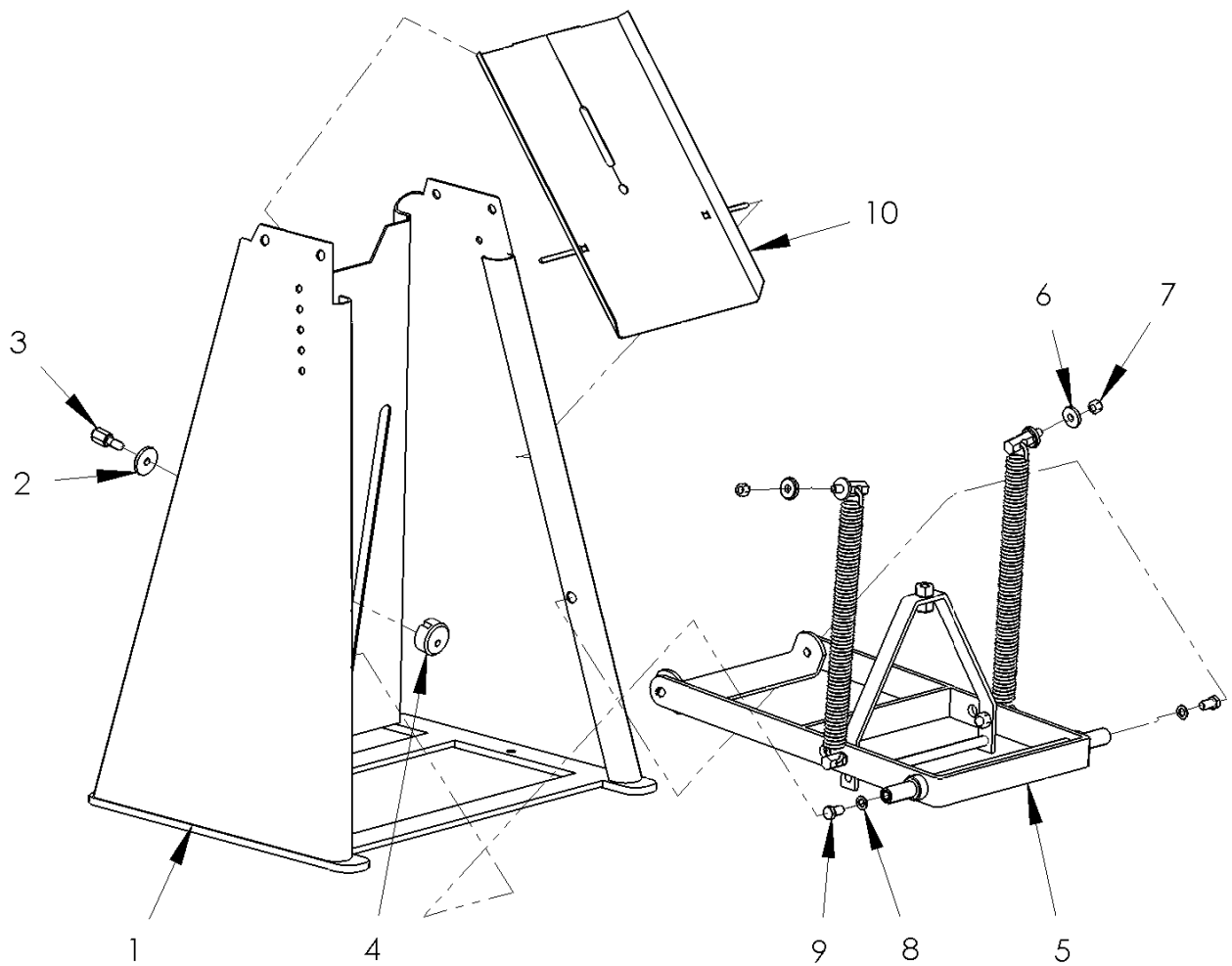


Oversigt - Index – Übersicht



Pos.	Betegnelse	Designation	Bezeichnung	Side/Page/Seite
1	Grundmaskine	Basic Machine	Grundmaschine	I-2
2	Bord, komplet	Table, complete	Tisch, komplett	I-3
3	Knivhovedenhed	Knife Block Unit	Messerkopf-Einheit	I-4
4	Drivmekanisme	Drive equipment	Antriebsmechanik	I-5
5	Falsstøtter	Rebate Supports	Falzauflagen	I-6
	Ekstraudstyr	Accessories	Zusatzrüstung	
6	Falsstøtter, autom.	Rebate Support, autom.	Falzauflage, automatisch	L-2

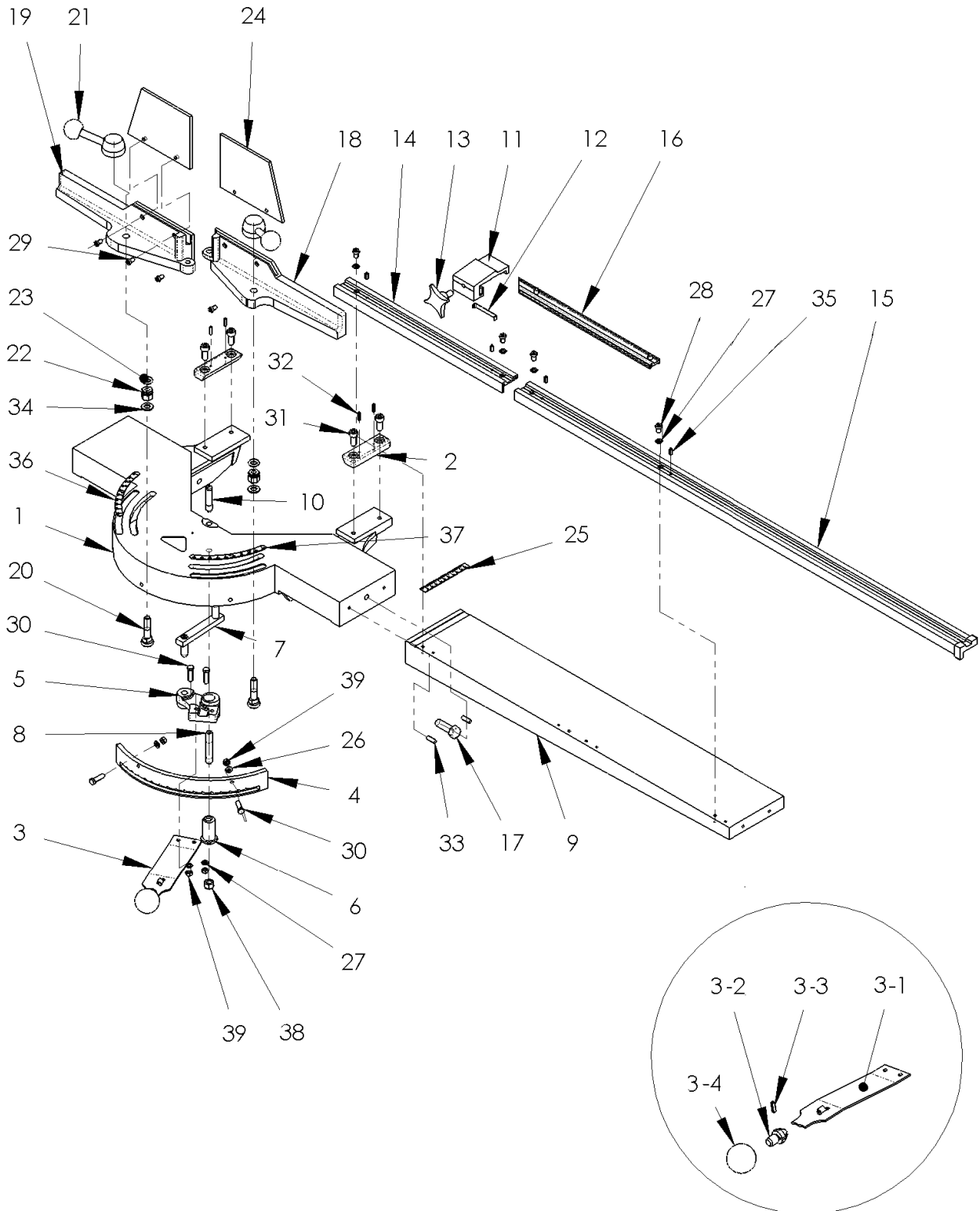
Basic machine – Grundmaschine



Basic Machine - Grundmaschine

Pos.	Art. No.	Designation	Bezeichnung
1	DAN30000326	Frame	Gestell
2	DAN80372224	Washer	Scheibe
3	DAN80382223	Screw	Schraube
4	DAN01602222	Height stop	Höhenbegrenzung
5	DAN99990217	Drive equipment, complete	Antriebsmechanik, komplett
6	DAN80281415	Washer	Scheibe
7	DAN43007008	Hexagon nut	Sechskantmutter
8	DAN40000010	Washer	Scheibe
9	DAN53010016	Hexagon screw	Sechskantschraube
10	2914	Waste chute	Rutsche

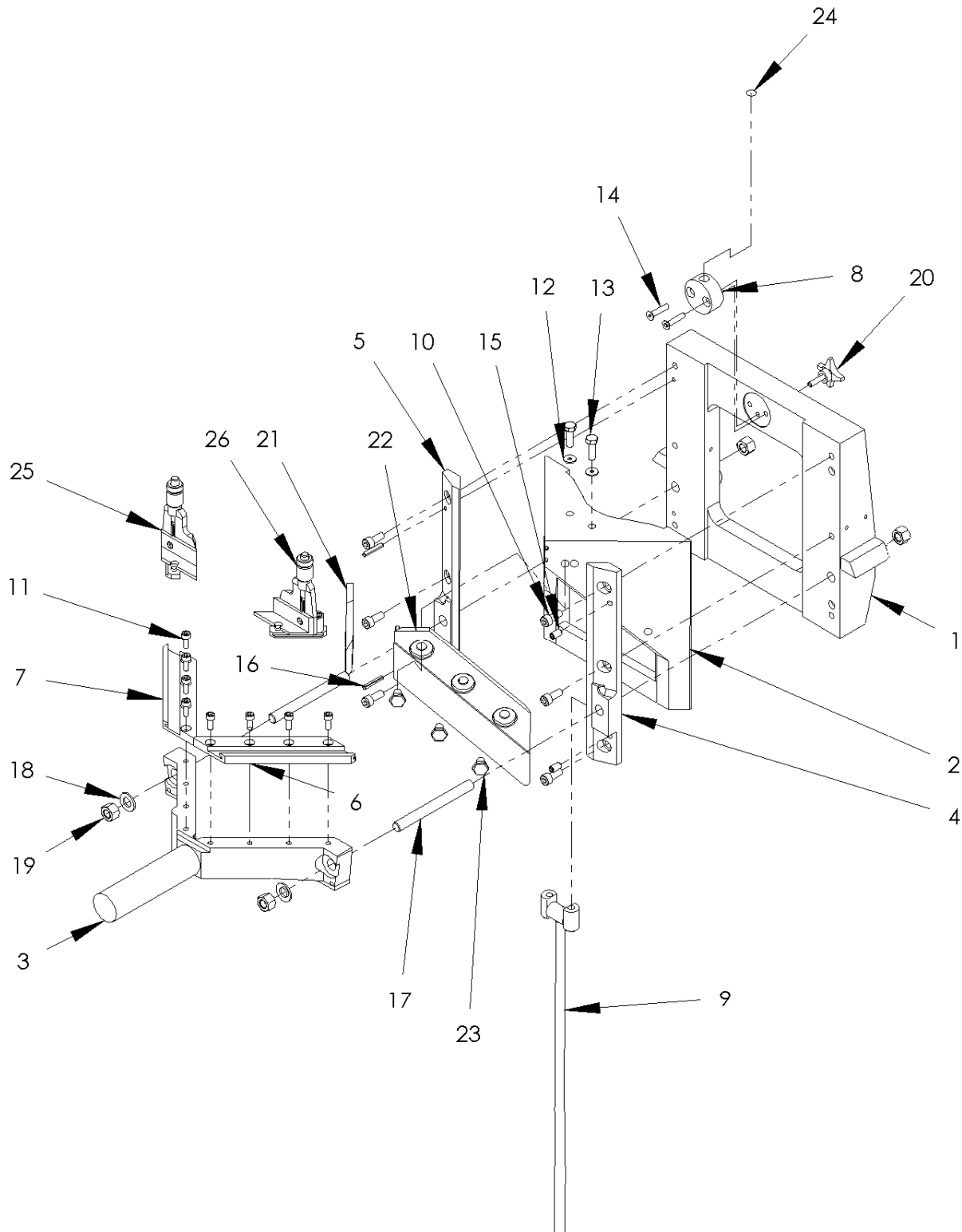
Table, complete – Tisch, komplett



Table, complete – Tisch, komplett

Pos	Art. Nr.	Designation	Bezeichnung
1	DAN20000120	Table	Tisch
2	DAN20000064	Short Guide Rail	Steuerleiste
3	DAN13504004	Hand Lever, complete	Stellhebel, komplett
3-1	DAN10350035	Hand Lever	Handgriff
3-2	DAN08394003	Ball Holder	Kugelhalter
3-3	DAN47002008	Clamping Pin	Spannstift
3-4	DAN65304003	Ball	Kugelknopf
4	DAN19504005	Tooth Arc	Zahnbogen
5	DAN20000407	Bell Crank Lever	Exzenterhebel
6	DAN81110408	Bushing	Buchse
7	DAN30000406	Tie Rod	Zughebel
8	DAN81124001	Pivot	Stützbolzen
9	DAN20000061	Table extension	Tischverlängerung
10	DAN30000177	Steering Pivot	Steuerzapfen
11	DAN60785009	Stop block	Endanschlag
12	DAN67785007	Spring	Feder
13	DAN60785008	Star wheel	Sterngriff
14	DAN74501012	Divided beam	Meßschiene
15	DAN74801010	Divided beam	Meßschiene
16	DAN74001011	Stop beam	Anschlagschiene
17	DAN55716015	Hexagon screw	Sechskantschraube
18	DAN20000170H	Fence	Anschlagleiste
19	DAN20000170V	Fence	Anschlagleiste
20	DAN80570071	Bolt	Bolzen
21	DAN30000172	Handle (spanner), complete.	Handgriff komplett
22	DAN80600073	Hexagon nut	Sechskantmutter
23	DAN69131262	O-ring	O-Ring
24	DAN17600076	Safety guard	Unfallschutz
25	DAN64610110	Measuring Tape	Meßband
26	DAN41000106	Spring Washer	Federscheibe
27	DAN40000006	Washer	Scheibe
28	DAN50006010	Socket Head Screw	Zylinderschraube
29	DAN50005010	Socket Head Screw	Zylinderschraube
30	DAN53006025	Hexagon Bolt	Sechskantschraube
31	DAN50008020	Socket Head Screw	Zylinderschraube
32	DAN47003016	Clamping Pin	Spannstift
33	DAN48005020	Notched pin	Kerbstift
34	DAN40000010	Washer	Scheibe
35	DAN47004012	Clamping Pin	Spannstift
36	DAN64013160V	Measuring Tape	Meßband
37	DAN64013160H	Measuring Tape	Meßband
38	DAN43007008	Hexagon Nut	Sechskantmutter
39	DAN43000006	Hexagon Nut	Sechskantmutter

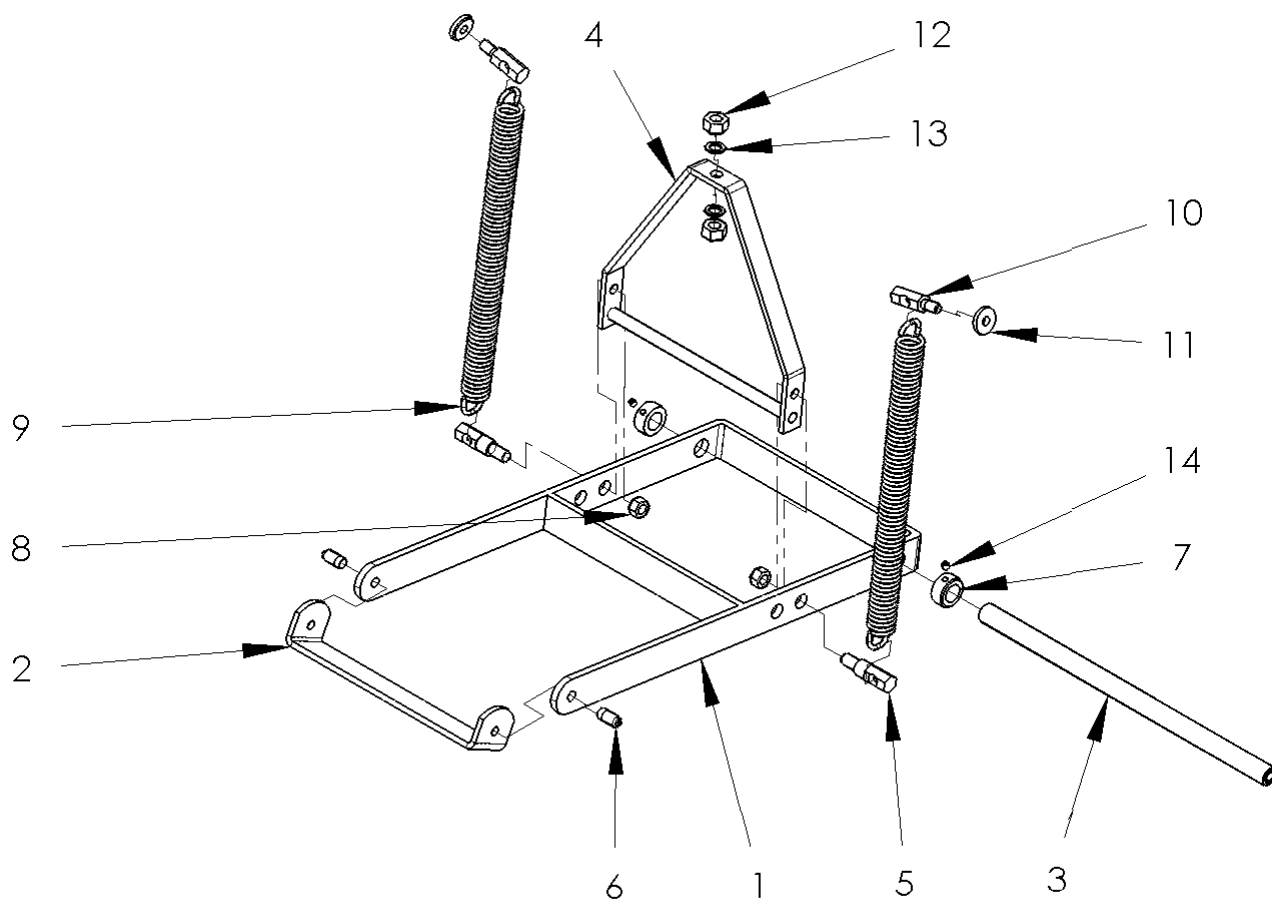
Knife Block Unit - Messerkopf-Einheit



Knife Block Unit - Messerkopf-Einheit

Pos	Art. No.	Designation	Bezeichnung
1	DAN00000130	Slide Frame	Schlittenrahmen
2	DAN20000140	Knife Block	Messerkopf
3	DAN20000160	Cross	Kreuzstück
4	DAN26500050H	Long Guide Rail	Steuerleiste
5	DAN26500050V	Long Guide Rail	Steuerleiste
6	DAN14700302H	Bottom Knife	Untermesser
7	DAN14700302V	Bottom Knife	Untermesser
8	DAN17700077	Clamping Device	Spannstück
9	DAN01000101	Draw Bar	Verbindungsstange
10	DAN50008020	Countersunk Screw	Schraube, versenkt
11	DAN50160304	Cylinder Screw	Zylinderschraube
12	DAN40000008	Washer	Scheibe
13	DAN53008025	Hexagon Screw	Sechskantschraube
14	DAN49006025	Countersunk Screw	Senkschraube
15	DAN52008016	Clamping Pin	Spannstift
16	DAN47005030	Clamping Pin	Spannstift
17	DAN80820052	Stud	Stiftschraube
18	DAN41000216	Washer	Scheibe
19	DAN43000012	Hexagon Nut	Sechskantmutter
20	DAN60785007	Star Wheel	Sterngriff
21	DAN30000301V	Knife	Messer
22	DAN30000301H	Knife	Messer
23	DAN80870303	Blade Bolt	Sechskantschraube
24	DAN17701078	Safety Guard, complete	Schutzschirm, kompl.
25	2135	Rebate Support, compl.	Falzauflage, kompl.
26			

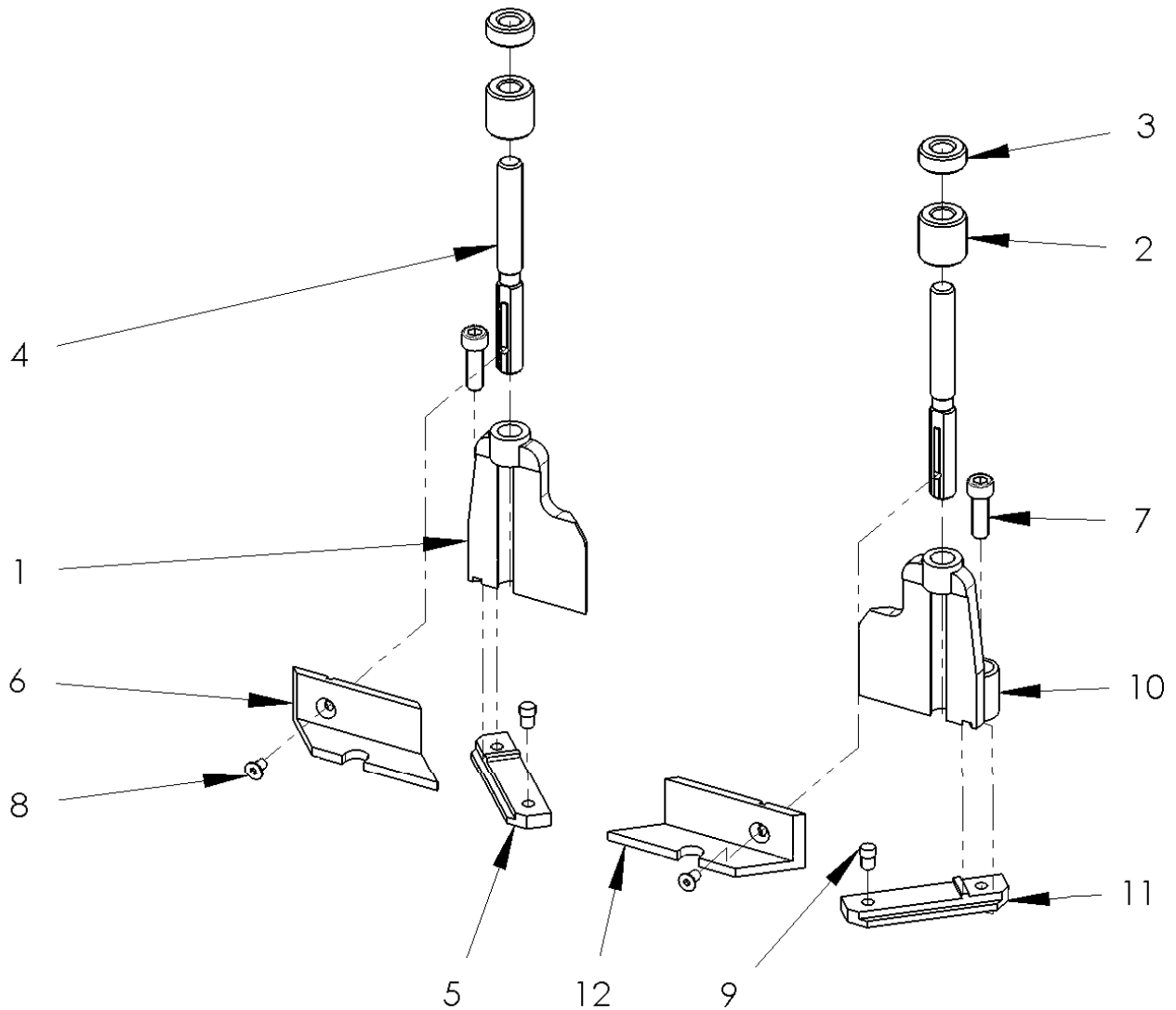
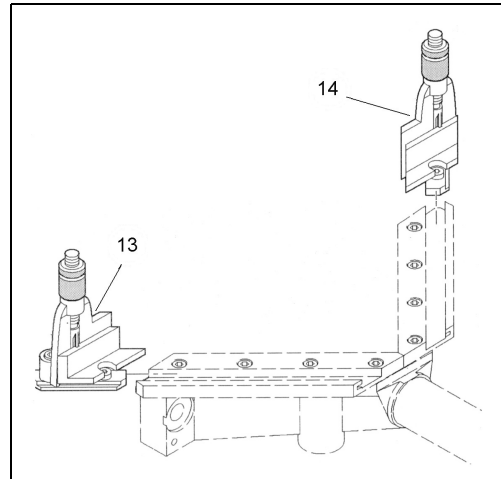
Drive Equipment - Antriebsmechanik



Drive Equipment - Antriebsmechanik

Pos	Art. No.	Designation	Bezeichnung
1	DAN00000217	Foot pedal tipper	Fußhebel
2	DAN01000070	Pedal	Pedal
3	DAN01102121	Shaft	Achse
4	DAN00000219	Draw bow, complete	Zugbügel, komplett
5	DAN80971915	Draw bow holder	Zugbügelhalter
6	DAN01101716	Pivot	Zapfenschraube
7	DAN80022124	Set collar	Stelling
8	DAN43007016	Hexagon nut	Sechskantmutter
9	2134	Extension spring	Zugfeder
10	DAN80271420	Spring holder	Federhalter
11	DAN80281415	Washer	Scheibe
12	DAN43007020	Hexagon nut	Sechskantmutter
13	DAN40000012	Washer	Scheibe
14	DAN51006008	Grub screw	Gewindestift

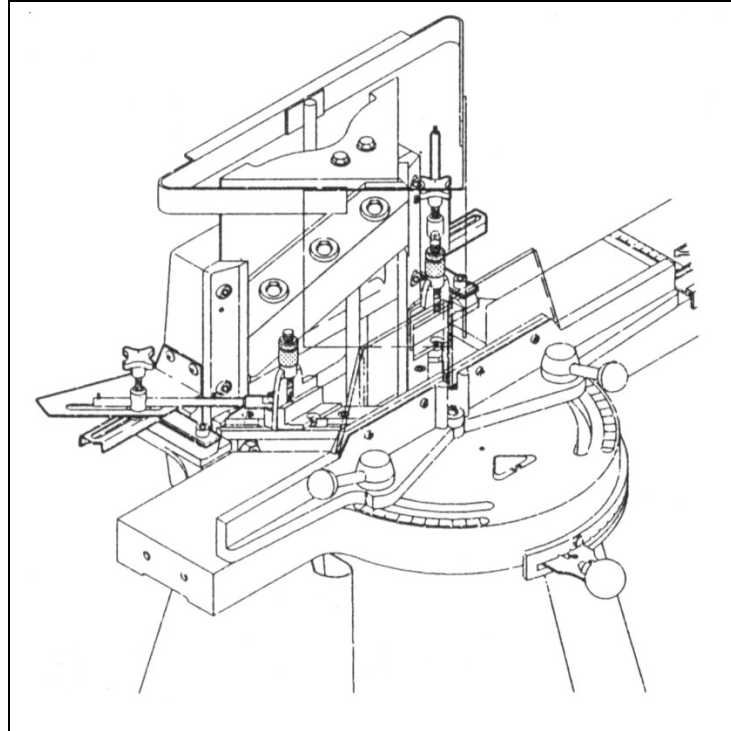
Rebate Support - Falzauflagen



Rebate Support - Falzauflagen

Pos.	Art. No.	Designation	Bezeichnung
1	DAN21403403V	Holder	Halter
2	DAN80233603	Knurled Nut	Rändelmutter
3	DAN80243703	Knurled Lock-nut	Rändelmutter
4	DAN12503903	Pin f. rebate support	Zapfen f. Falzauflagen
5	DAN12203003V	Bottom Part	Unterteil
6	DAN12203203V	Angle Iron	Winkelstahl
7	DAN50006020	Cylinder Screw	Zylinderschraube
8	DAN49004010	Countersunk Screw	Schraube, versenkt
9	DAN12300010	Pin	Zapfen
10	DAN21403403H	Holder	Halter
11	DAN12203003H	Bottom Part	Unterteil
12	DAN12203203H	Angle Iron	Winkelstahl
13	2135	Rebate Support compl.	Falzauflage kompl.
14			

Automatic Rebate Support Attachment.



The automatic rebate support attachment is available as an accessory.

The automatic rebate support attachment is ideal for series production of frames.

With this accessory, the rebate supports automatically return to the adjusted width after each cutting cycle. Manual resetting is therefore eliminated.

The rebate supports are adjusted both to the width of the moulding and the height of the rebate.

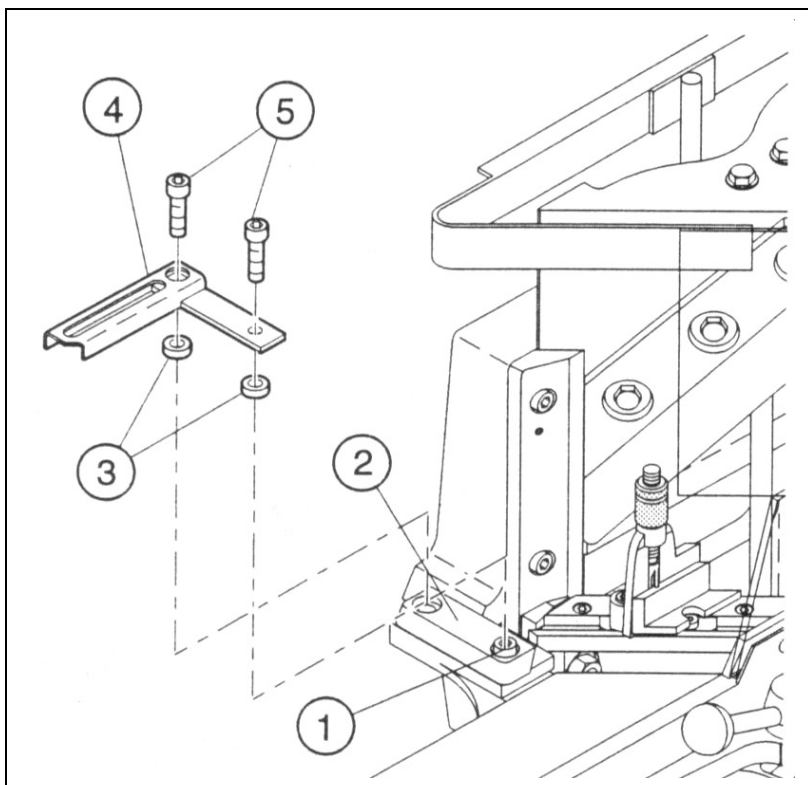
During the cutting cycle when the knives are manually moved forward the rebate supports will automatically move in sequence.

When the cutting cycle is finished, and the knives are returned to the rearmost position, the automatic rebate supports also return in unison, ready to accept the next work piece.

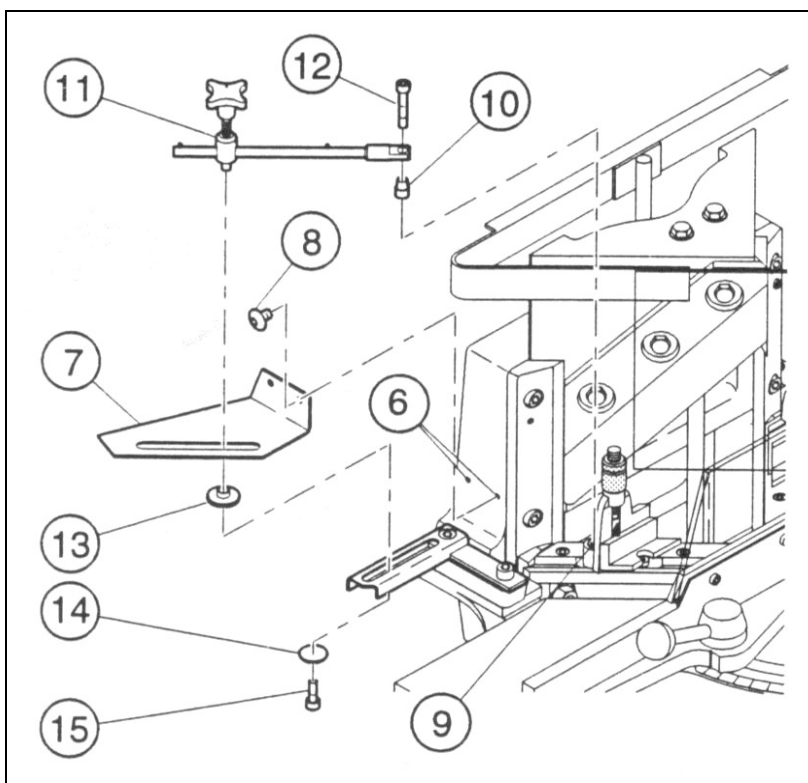


Beware of the extremely sharp knives

Installation Instructions



L-1-2



L-1-2-1

Installation Instructions

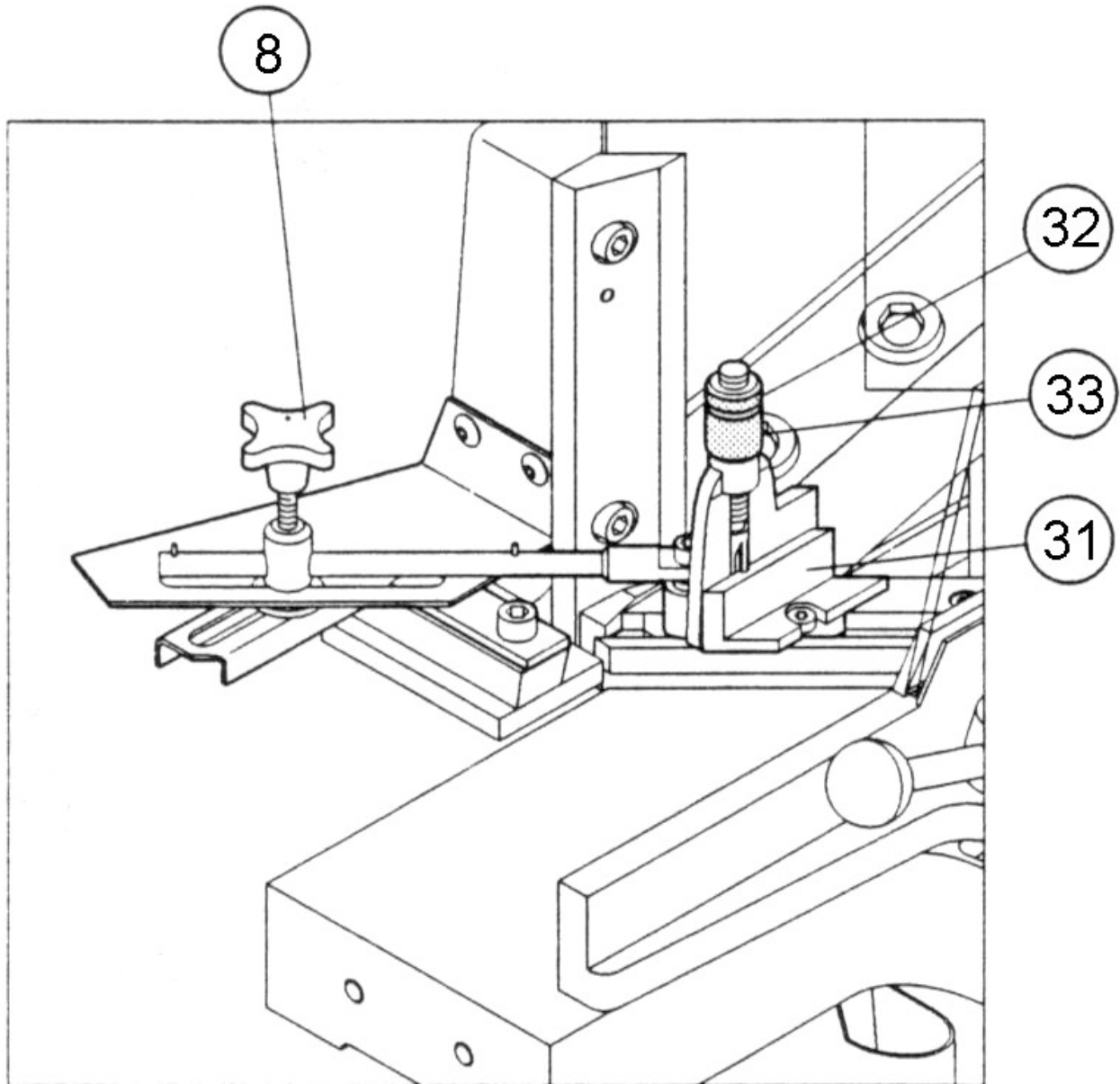
Install the attachment on the left side first.

1. The knife block unit must be in the rearmost position and locked in the bottom position.
Under no circumstances must the knife block be moved during the installation of the automatic rebate support system.
2. Remove the screws (1) from the short guide rail (2). The screws (1) are replaced by screws (5).
3. Locate bushes (3) in the borings on the short guide rail (2). If the bushes (3) do not protrude above the borings put one of the included four washers (not shown on the drawing) under each bush.
4. Install the bottom part (4) on the short guide rail (2) with the screws (5).
5. The screws (5) are screwed in so that there is a distance of about 0.1 mm between the slide frame and the short guide rail (2).
6. Repeat this process for the right hand side of the attachment.
7. Place the included distance piece (PVC) on top of the bottom part (4), (covering the slider hole) Place the top plate (7) on top of the distance piece, and locate the front edge of the vertical side of the top plate, so that it is in line with the gap between the slide frame and the long guide. Mark and drill the two holes (6) 4.2 mm (drill bit included) in the slide frame according to the holes in the top plate (7) (depth of holes approximately 15 mm).
NOTE: On machines delivered after 1995.02.01 the holes are already pre-drilled.
8. Secure the top plate (7) to the slide frame with the two self tapping screws (8).
9. Remove screw (9) in the rebate support and put in the spacer bush (10).
10. Install the draw bar (11) with the screw (12) - the draw bar holder must slide in the slot on both the top plate (7) and the bottom part (4).
11. Place the slide bar (13) between the top plate (7) and the bottom part (4).
12. Locate the washer (14) with the screw (15).



Beware of the extremely sharp knives

Adjustment of Rebate Supports



Adjustment of Rebate Supports

The knife block must be in the topmost position during the adjustment.

The rebate supports are only used when cutting mouldings which have a rebate.

To adjust the rebate support to the current work piece, the star wheel (8) and knurled lock nuts (32) are loosened.

Place the moulding in the machine. Slide the rebate supports (31) into the rebate of the moulding.

Press the moulding down on the machine table.

The height of the rebate supports is adjusted by means of the knurled nut (33). The rebate supports must be adjusted so that there is approx. 0.5 mm clearance between the rebate of the moulding and the support.

After the adjustment the knurled lock-nuts (32) are tightened.

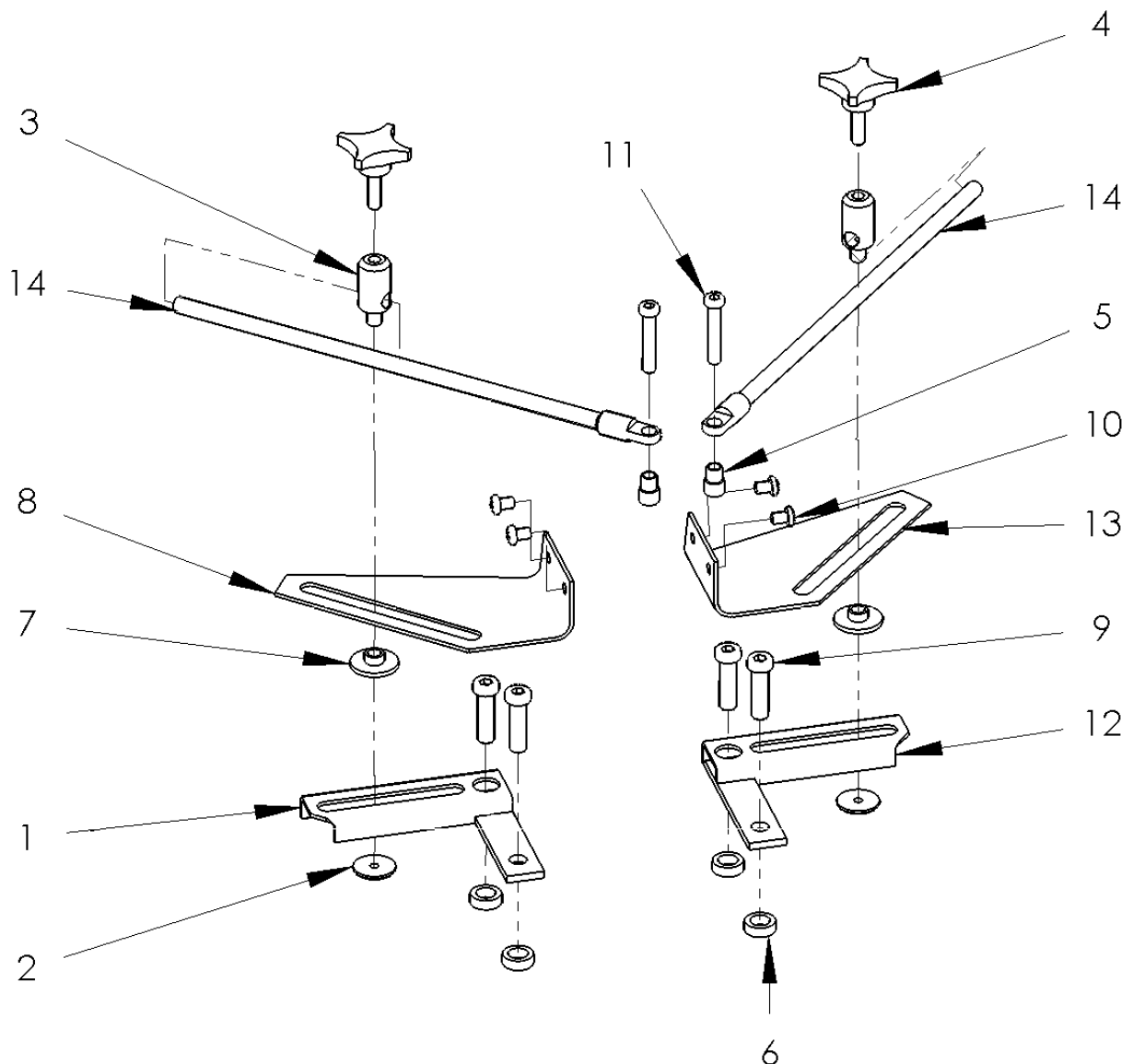
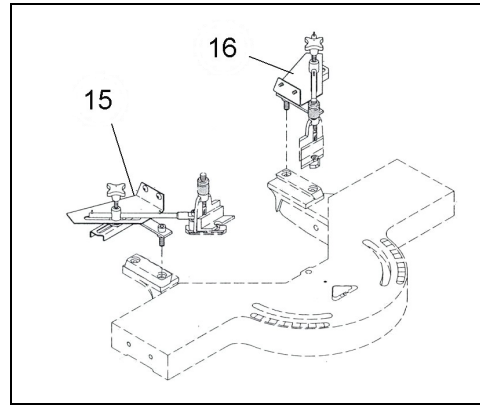
The rebate support draw bars are locked in position with star wheel (8) so that they have a clearance of about 0.5 mm from the moulding.

If desired, the rebate supports can be removed from the machine when the knife block is in the rearmost position.



Beware of the extremely sharp knives

Accessories- Automatic Rebate Supports. Zusatzausrüstung Falzauflagen, autom.



Accessories- Automatic Rebate Supports. Zusatzausrüstung Falzauflagen, autom.

Pos.	Art. No.	Designation	Bezeichnung
1	DAN05000121V	Bottom Part	Unterteil
2	DAN05000125	Washer	Unterlegscheibe
3	DAN05000123	Holder	Halter
4	DAN60785007	Star Wheel	Sterngriff
5	DAN05000127	Spacing bush	Buchse
6	DAN05000126	Bushes	Buchse
7	DAN05000124	Slide Bush	Gleitstück
8	DAN05000120V	Top Plate	Oberplatte
9	DAN50008030	Cylinder Screw	Zylinderschraube
10	DAN49005008	Screw	Schraube
11	DAN50006035	Cylinder Screw	Zylinderschraube
12	DAN05000121H	Bottom Part	Unterteil
13	DAN05000120H	Top Plate	Oberplatte
14	DAN05000122	Draw Bar	Verbindungsstange
15	DAN0900 V	Automatic Rebate Support, complete, left hand	Falzauflage, Automatik Komplett, links
16	DAN0900 H	Automatic Rebate Support, complete, right hand	Falzauflage, Automatik Komplett, rechts